

## MAINTENANCE CONTINUED

Sand means certain death to anything with moving parts. If you should drop the BogaGrip on the beach and get sand in it, washing it out in the water will restore it to working order. You may, when you get home, need to take it apart and do a thorough cleaning to get out all the grit and restore its smooth action. IMPORTANT: 17-4 PH stainless steel jaws require rinsing with fresh water daily after being exposed to saltwater. They will stain if not rinsed.

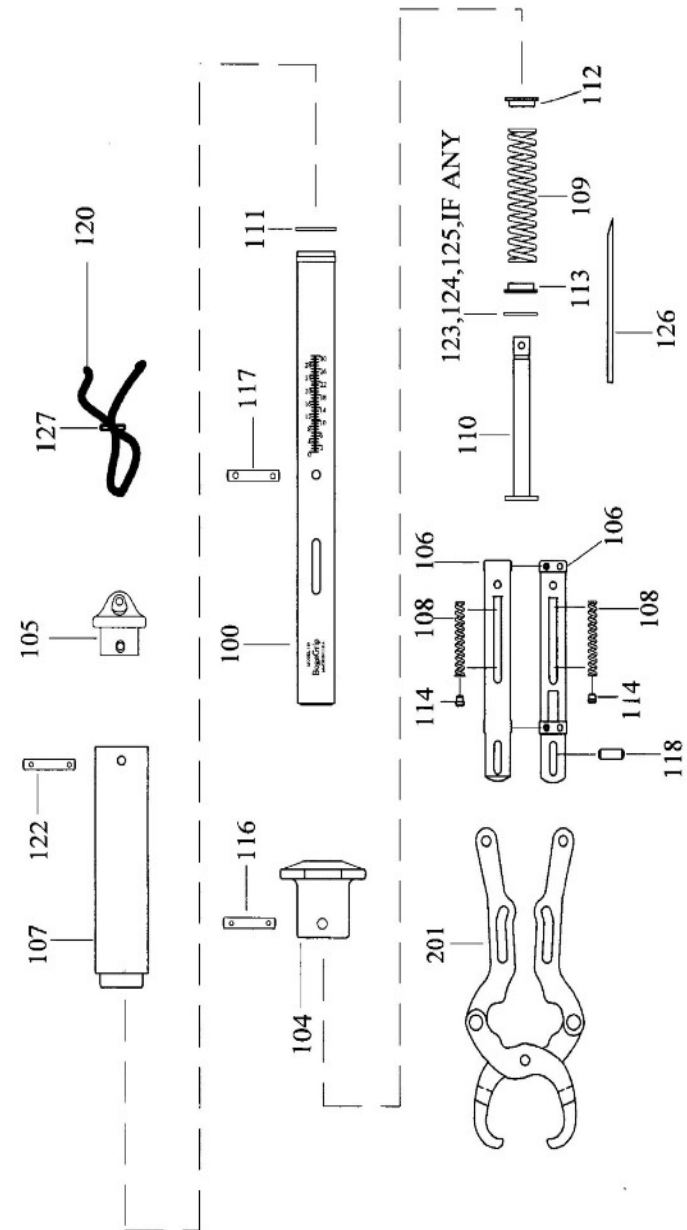
### TO DISASSEMBLE FOR CLEANING

1. Push out the three detent pins (116, 117, 122). This may usually be done by pushing with the flat end of the assembly tool (126). If they are too tight, use a plastic hammer or wood block to tap them out with the assembly tool. (126) (Note: The use of metal hammer will damage the angled end of the assembly tool.)
2. Slide the end cap (105), and grip tube (107) off of body housing (100).
3. Pull arm of jaw-pendulum arm assembly (201) out of longest slot in side of body housing (100). Push in slightly on spring retainers (106) to allow rivet in jaw-pendulum assembly (201) to clear and then pull jaw-pendulum arm assembly (201) clear of body housing (100).
4. Slide the trigger (104) off of body housing (100).
5. Remove brake washer (111) from end of scale rod (110).
6. Push the end of the scale rod (110) in until the spring retainer (106) clears the end of the body housing (100). Then insert the assembly tool (126) into the spring retainer (106) end slot and pull it out. Watch for the trigger springs (108) as they may jump out of their slots.
7. The scale rod (110), adjusting washers (123, 124, 125 if any), black centering washer (113), scale spring (109) and white centering washer (112) will now fall out of the body housing (100).

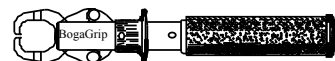
### TO REASSEMBLE

1. Slide the adjusting washers (123, 124, 125 if any), black centering washer (113), scale spring (109) and white centering washer (112) onto the scale rod (110) and slide them into the body housing (100).
2. Put the trigger springs (108) with trigger spring ends (114) into their slots and slide the spring retainer (106) into the body housing (100) using it to push out the scale rod (110) while putting the brake washer (111) on the groove in the scale rod (110).
3. Slide the trigger (104) on the body housing (100).
4. Put the jaw-pendulum arm assemblies (201) into the body housing (100)
5. Place the assembly tool (126) (angled end first) into the trigger (104) hole and body housing (100) slots at the end of the trigger spring ends (114) being careful to not go thru the trigger springs (108) and push it thru using the trigger pin (116). (Note: The trigger pin's (116) detent balls are farther apart than the grip pin's (122) detent balls.)
6. Slide the grip tube (107) onto the body housing (100). Put the end cap (105) into the end of the grip tube (107). Align the holes in the grip tube (107), end cap (105), and scale rod (110) with the assembly tool (126) and push it thru using the grip pin (122). (Note: The grip pin's (122) detent balls are closer together than the trigger pin's (116) detent balls.)
7. Place the assembly tool (126) into the pendulum pin hole in the body housing (100), spring retainer (106) pendulum pin holes and pendulum arm's (201) pendulum pin holes and push it through using the pendulum pin (117).

1:22 DETENT BALLS ARE CLOSER THAN 1:16



PARTS LIST



Patented

**BogaGrip**®

PART#	PART NAME	PART#	PART NAME
100	BODY HOUSING	113	BLACK CENTERING WASHER
201	JAW-PENDULUM ARM	114	TRIGGER SPRING END
104	TRIGGER	116	TRIGGER PIN
105	END CAP	117	PENDULUM PIN
106	SPRING RETAINER	118	JAW PIN
107	GRIP TUBE	120	WRIST STRAP
108	TRIGGER SPRING	122	GRIP PIN
109	SCALE SPRING	123	ADJUSTING WASHER .010
110	SCALE ROD	124	ADJUSTING WASHER .020
111	BRAKE WASHER	125	ADJUSTING WASHER .005
112	WHITE CENTERING WASHER	126	ASSEMBLY TOOL
		127	NOCK

**EASTABOGA TACKLE MFG. CO., INC.**

261 MUDD STREET ~ EASTABOGA, ALABAMA 36260 ~ (256) 831 9682 / FAX (256) 835 - 2524  
[www.eastabogataackle.com](http://www.eastabogataackle.com) [info@eastabogataackle.com](mailto:info@eastabogataackle.com)

**MODEL 430 BOGAGRIP  
 BOGAGRIP PATENT # 5,119,585**

**INTRODUCTION**

Thank you for purchasing a BogaGrip and we hope that you have many opportunities to use it landing, handling and weighing fish. We feel that after you use it a time or two, it will become a tool that you will always want near while fishing.

The model 430 BogaGrip handles fish by encompassing the fish's lower jawbone and will easily handle 30 pound fish of most species. However it is not intended to be used on fish that, let's say would be dangerous to lip gaff (billfish, sharks, etc. ).

The BogaGrip features four functions acting together that allow it to work nearly flawlessly. First, the jaws are arranged such that the weight of the fish will cause the jaws to shut even tighter. Secondly, it has a locking mechanism that keeps the jaws in their tightest position. Thirdly, it has a swiveling motion that eliminates the torque a spinning fish may apply. Fourthly, it has a shock absorber that dampens a fish's attempt to get free.

The BogaGrip is made in the USA of USA made materials. All metal parts of the model 430 BogaGrip are made of 300 series stainless steel with the exception of the precision scale spring which is 17-7 PH stainless steel. All plastic parts are made from black acetal which is a high performance engineering thermoplastic that is used in unlubricated bearing applications. Acetal is tough and resilient and is very resistant to UV light. Constructing the BogaGrip of these materials makes it very strong and resistant to conditions encountered while fishing in fresh or saltwater.

Each BogaGrip's scale is calibrated with certified weights to insure accuracy within one increment. You can send your BogaGrip to IGFA ( 954-927-2628 Dania Beach, FL ) where they can certify it for world record catches.

**TO OPERATE**

To use the BogaGrip, grasp it by the black vinyl grip, and using your index finger or thumb, pull back on the trigger. This will open the jaws. Then place the jaws around the **tip of the lower jawbone** of the fish and release the trigger. This will close and lock the jaws. Now lift the fish and remove the hook. Lifting the BogaGrip vertically will utilize the weight of the fish to pull the jaws shut and locked even tighter. The fish's weight may now be read while keeping the BogaGrip as vertical as possible. If you are weighing a dead fish or an inanimate object, you will get a slightly more accurate reading by holding or hanging by the wrist strap. This will plumb the scales. A lively fish will plumb itself and may be weighed accurately while holding the grip. If you are pulling horizontally to check a pull force, add 5/8 pound.

The fish is released by placing the fish down in the water, boat or on the bank, etc., and pulling back on the trigger again.

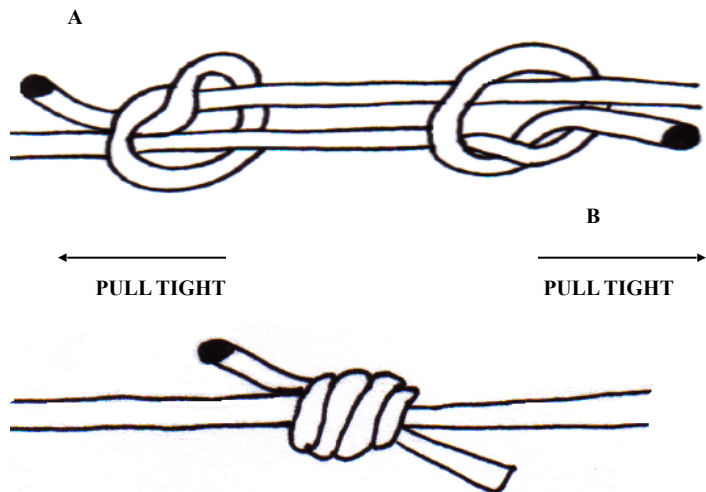
**MAINTENANCE**

Your BogaGrip requires little maintenance other than to keep it clean. Simply rinse it off with tap water when it has been exposed to muddy water or saltwater because they will leave a gritty residue if left to dry. This makes the BogaGrip's action less smooth. The BogaGrip will work fine without any lubrication, however it is advisable to put a drop or two of light machine oil on the trigger pin, jaw pin, and connecting rivets. (NOTE: Use silicone if fishing in sub-freezing weather)

**RECOMMENDED KNOT TO USE ON WRIST STRAP**

**FISHERMAN'S KNOT**

Make an overhand knot and leave it open using end A of cord.  
 Pass end B through knot and make an overhand knot around end A of cord pull knots tight.



Continued next page